

Co-Creating Community Safety & Well-Being: Meaningful Collaboration & Engagement

**2024 Crime Prevention Conference
The Path to Resilience: Crime Prevention and
Community Safety and Wellbeing**

Felix Munger

Canadian Centre for
Safer Communities



Centre canadien pour des
collectivités plus sûres

AGENDA

- Short Introduction to CSWB
- Community engagements/consultations
 - Types & principles of community engagements
 - Approaches to community engagements
- Collaborative Decision-Making
 - Collaboration – why, how & who
 - Decision-making
 - Principles of collaborative decision-making



COMMUNITY SAFETY & WELL-BEING

PRINCIPLES OF CSWB STRATEGIES



Identifying local priorities and challenges (addressing root causes & risk factors)



Working collaboratively to address priorities and challenges



Implementing evidence-informed approaches and solutions



Increasing collaboration and coordination of efforts / initiatives



Transforming service delivery to better align with priorities and needs



Increasing engagement of community groups and residents



Reducing investment in and reliance on incident response

COMMUNITY CONSULTATIONS & ENGAGEMENTS

Together for Safer Canadian Cities

QUALITATIVE DATA

01

General consultations:

Consultations with key stakeholders (e.g., service providers, business community, elected officials, etc.).

02

Community-led consultations:

Consultations guided by local agencies or partners. Reaching community members who are marginalized or experience more systemic barriers.

03

Indigenous Consultations:

Consultations with Indigenous community members in partnership with local partners and Indigenous facilitators.

04

Field Study:

Site visit to conduct geographic observations and mapping with a view to placemaking, CPTED, etc.

POTENTIAL GROUPS

Local Stakeholders, Practitioners, and Service Providers

- Community-based organizations
- Social service and well-being agencies
- Other key sectors (health, education, etc.).
- Municipal government / Elected officials

Equity Deserving Groups & People with Lived/Living Experience

- Indigenous peoples
- 2SLGBTQ+ community
- Early childhood & families
- Newcomers / Immigrants
- Older adults
- People with disabilities
- People experiencing homelessness
- Loved ones of people with lived or living experience
- People with mental health and/or substance use challenges
- Women living in shelter
- Black and people of colour
- College / University students
- Youth

Other

- Community / Neighbourhood associations
- Business community
- Farmers / Agricultural associations

**LESSON #1:
Work with
Local
Partners**

- Initial introduction meeting
- Feedback on engagement approach
- Help adapt approach based on group
- Leverage existing relationships
- Provide logistical support and guidance

- Number of consultations may change
- Allow for flexible timelines
- Follow partner guidance and feedback
- Adapt based on community feedback



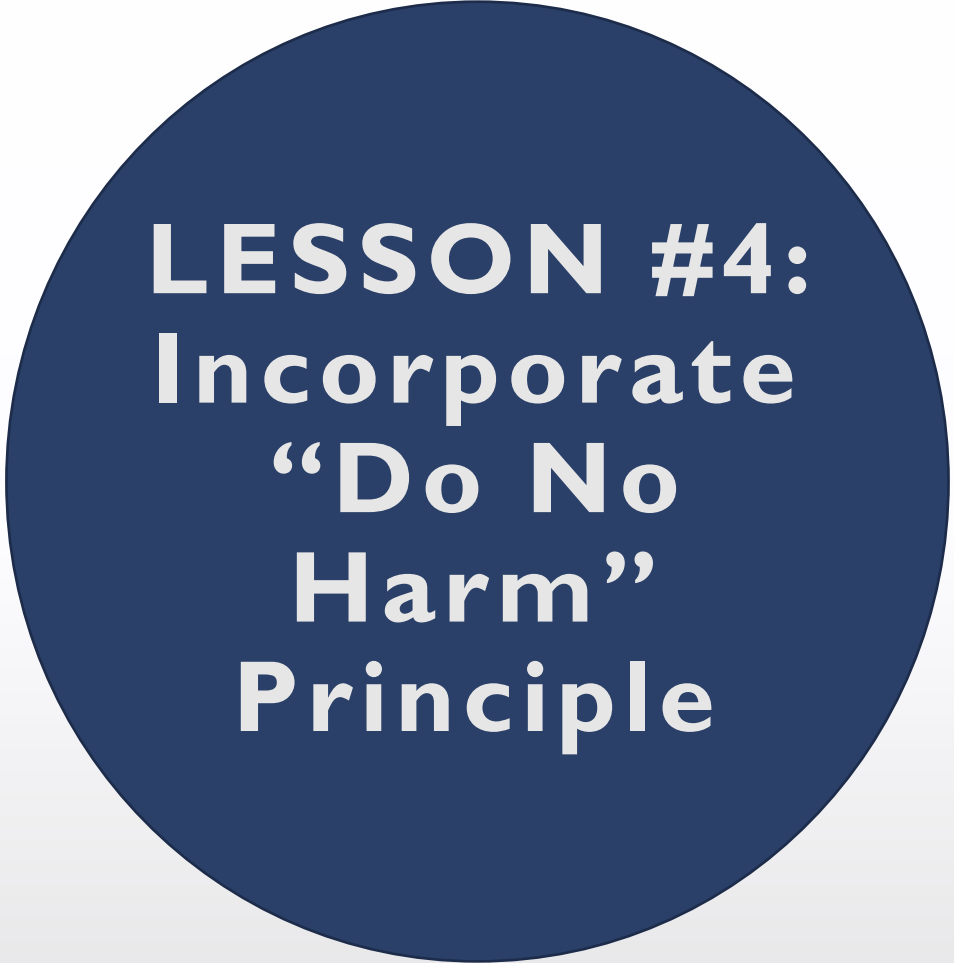
**LESSON #2:
Be Flexible**

**LESSON #3:
Ask a few,
simple
questions**

- Simple, accessible language
- Broad questions allow for interpretation
- Similar questions for all groups

- What makes you feel safe and happy in our community?
- What for you are key issues related to community safety and well-being in our community?
- What are some ideas or opportunities to increase community safety and well-being in our community?

- Adapt the approach to each group's needs
- Consider accessibility needs
- Offer crisis support during and after
- Offer honorariums
- Provide information and consent forms
- Include trigger warnings when appropriate
- Send follow-up email to validate what you heard



**LESSON #4:
Incorporate
“Do No
Harm”
Principle**



**LESSON #5:
Be creative!**

- Consider creative consultation approaches
- Allow partners to be innovative

EXAMPLE OF CONSULTATION APPROACHES

CITY-LED CONSULTATIONS

Initial meeting
with partners

Invitations sent to
participants

Engagement
session facilitated
by City

Community
partners
encouraged to
attend

Minimal concern
for potential harm

PARTNER-LED CONSULTATIONS

Engagement session
facilitated by partner

Project team
members are present

Invitation sent by
partner

Partners engage with
someone familiar

Groups who feel
comfortable speaking
to people with pre-
established
relationship

SELF-GUIDED CONSULTATIONS

Led exclusively by
partner
organization

Project team not
present

DIY Guide
provided to
external facilitator

Groups who have
concerns about
harm / trauma

Groups who have
distrust in local
government

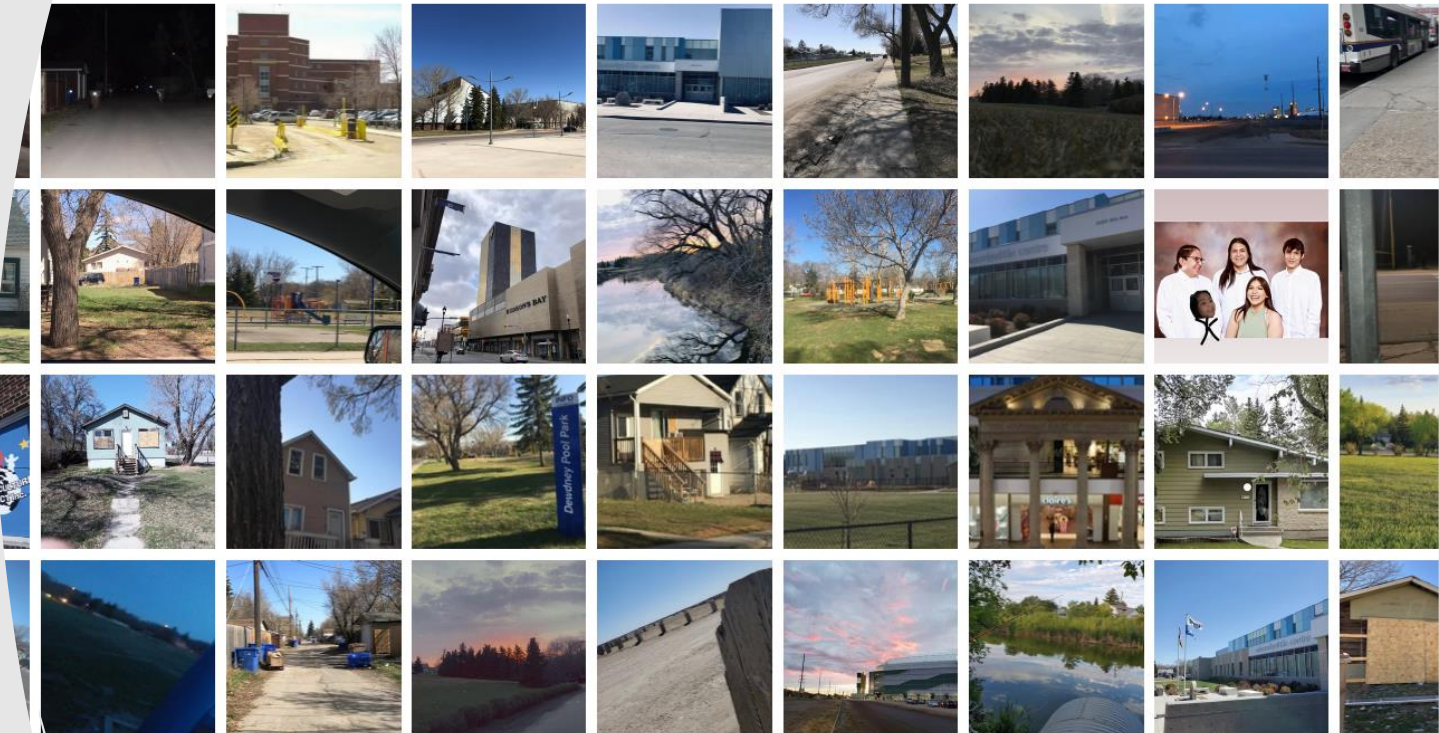
EXAMPLE OF CONSULTATION METHODS

Youth Photography Project

Gallery

In the photos showcased below, you will discover youth perspectives on spaces that will make them feel happy, safe, or less safe in Regina.

The youth photography project was conducted to inform the development of the City of Regina's Community Safety and Well-Being Plan.



Map



Indigenous Consultations

- Indigenous-led process – how do they want to contribute
- Order of consultations
- Engage during ceremony
- Protocol
 - Opening prayer by Elder
 - Smudging
 - Tobacco offering
 - Honorarium





CONCEPTS IN COLLABORATION & COLLABORATIVE DECISION-MAKING

SAMPLE WORK PLAN



IDENTIFYING & PRIORITIZING CHALLENGES & SOLUTIONS

Identification of Community Safety & Well-Being Themes

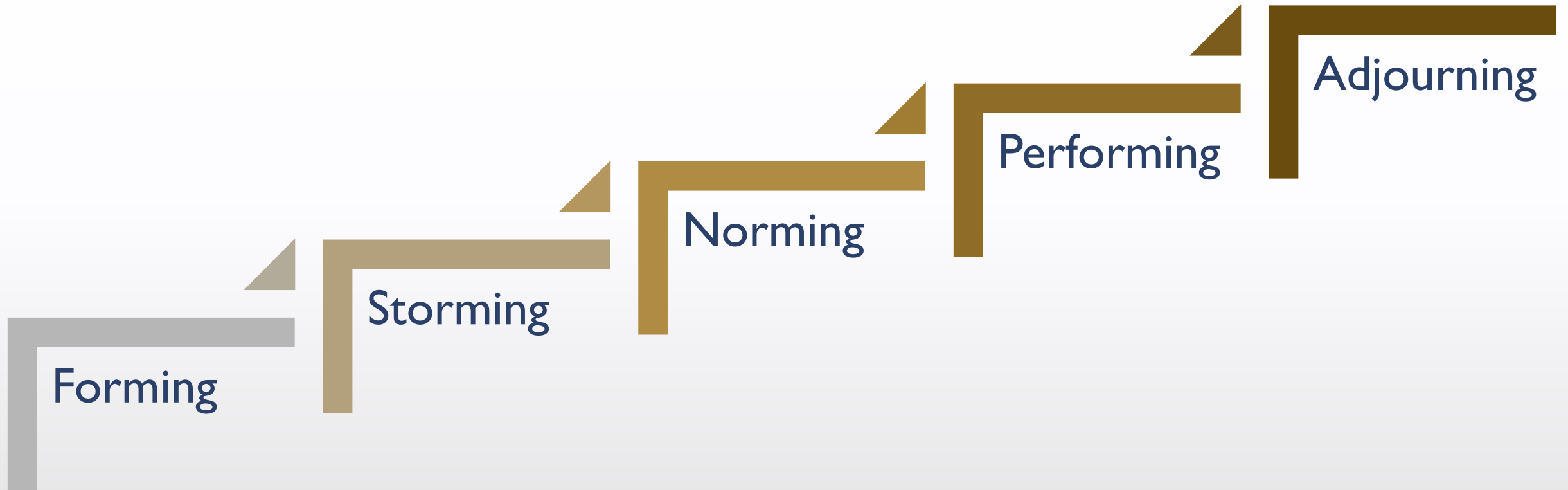


Prioritizing Community Safety & Well-Being Themes

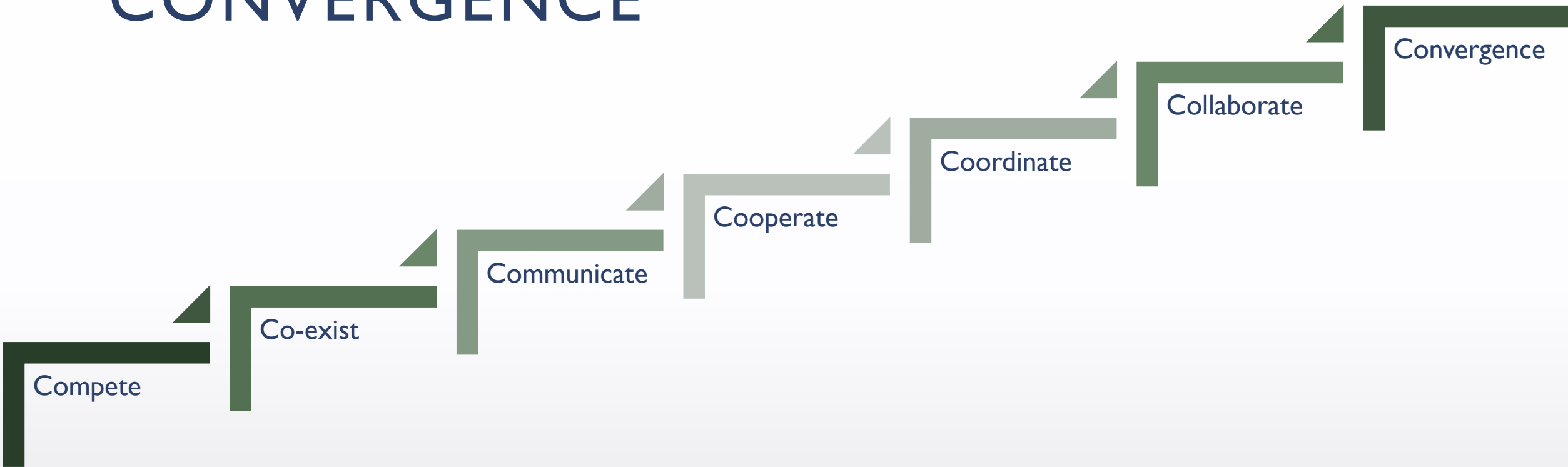


Identification of Programs, Projects, Systemic Changes

STAGES IN COLLABORATION



FROM COMPETITION TO CONVERGENCE



ACTIVITY



- Discuss who needs to be at the table to collaborate for community safety at the local level

SECTORS

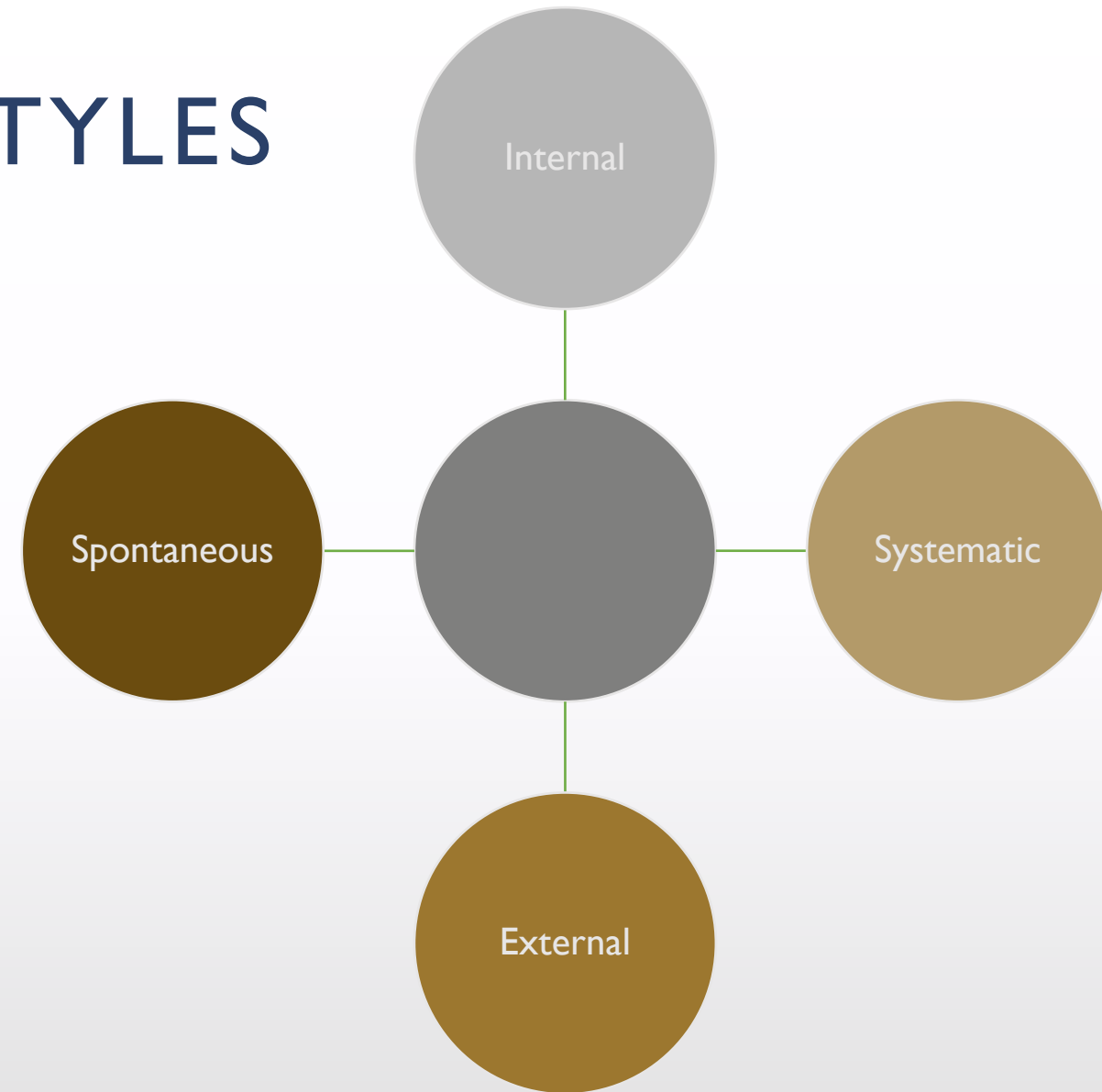


Outcome Bias

	Good Process	Bad Process
Good Outcome	Deserved success	Dumb Luck
Bad Outcome	Bad Break	Poetic Justice



DECISION-MAKING STYLES



Canadian Centre for Safer Communities (CCFSC)

Thank You

Canadian Centre for
Safer Communities



Centre canadien pour des
communautés plus sûres