



INTEGRATED SERVICE DELIVERY FOR NEW BRUNSWICK YOUTH

Jessica Forbes
Provincial Coordinator ISD

WHAT IS INTEGRATED SERVICE DELIVERY (ISD)?

- Integrated Service Delivery (ISD): local and regional governance and service delivery framework that enables partners to better work together, using a coordinated and integrated approach to meet the needs of children and youth at risk
- ISD is intended to address service gaps in early assessment and intervention services for children, youth and their families

SYSTEMIC GAPS

Connecting the Dots:

A report on the condition of youth-at-risk and youth with very complex needs in New Brunswick

Ombudsman

Child & Youth Advocate

CHILDREN AND YOUTHS WITH COMPLEX NEEDS

SERVICE DELIVERY MODEL DESIGN TEAM

FINAL REPORT

“A Service Delivery Model for a Continuum of Care for Children and Youths with Complex Needs”

August 2012

REVISED FEBRUARY 2013

Interdepartmental Service Delivery Design Team

- Andrée Beaudin, Social Development
- Eileen Gauthier, Social Development
- Annette Harland, Health
- Krista Martin, Health
- Shelley McLean, Education & Early Childhood Development
- Dria McPhee, Social Development
- Lucie Michaud, Health
- Aline Marie Robichaud, Social Development
- Kathie Rodger, Public Safety
- Denis Savoie, Social Development (Team Leader)

Staying Connected

A Report of the Task Force on a Culture of Excellence for Children and Youth with Complex Needs

Bernard Richard and Shirley Smallwood
Task Force Co-Chairs

The Ashley Smith Report

Ombudsman and Child and Youth Advocate

June 2008

PRE-ISD MULTIPLE REPORTS



Wait lists and wait times for key services



Lack of coordination in the assessment, planning and delivery of services



No mechanism to coordinate interventions interdepartmentally

ISD MEMBERSHIP

4 Departments

- Education and Early Childhood Development
 - 7 School Districts
- Health (Addictions and Mental Health Services)
 - 2 Regional Health Authorities
- Social Development
- Public Safety
- First Nations
- Community partners
- Youth

INTENTIONS AND ADVANTAGES OF ISD

Age 0-21

Family relationships,
physical health and
wellness

Strength-based
strategies

Academic, emotional,
behavioural
functioning and
mental health

Services directly to
children, youth and
their families

Prevention and
earlier interventions

Holistic, team-based
approach

Child, youth and
family-centered

Trauma informed
service delivery
(allowing child to only
tell their story once,
etc)

Service provided in
both the school and
community

From 'silos' to ISD:
One file, many
perspectives

Wrap community
around the
child/youth

Development of a
common plan

AMENDED LEGISLATION

Legislation that has been amended for the purpose of providing an authorized integrated program, service or activity	Section(s)
<i>Right to Information and Protection of Privacy Act</i>	1, 37(1)(b), 45(b), 46(1)(c)
<i>Personal Health Information Privacy and Access Act</i>	1, 27(2), 34(1), 38(1), 56(1)
<i>Family Services Act</i>	11(3)
<i>Family Income Security Act</i>	13.1(3)
<i>Mental Health Act</i>	17(5)
<i>Education Act</i>	56.3
<i>Early Childhood Services Act (not yet proclaimed)</i>	55(1)

SERVICE DELIVERY TEAMS

Ed Support Services Teams (ESST)

CY Team Member
School Administrators
Ed Support Teacher-Guidance
Ed Support Teacher-Resource
School Intervention Workers
Behaviour Mentors

Child & Youth Teams (C&Y)

Clinical Coordinator
Psychologists
Social Workers
Human Service Counselors
Ed Support Teacher-Guidance
Ed Support Teacher-Resource
Nurses and OTs
Behaviour Mentors

Social Development

Community Liaison
Social Workers
Program Delivery Managers
Regional Director
Prov. Director ISD for SD

Justice and Public Safety

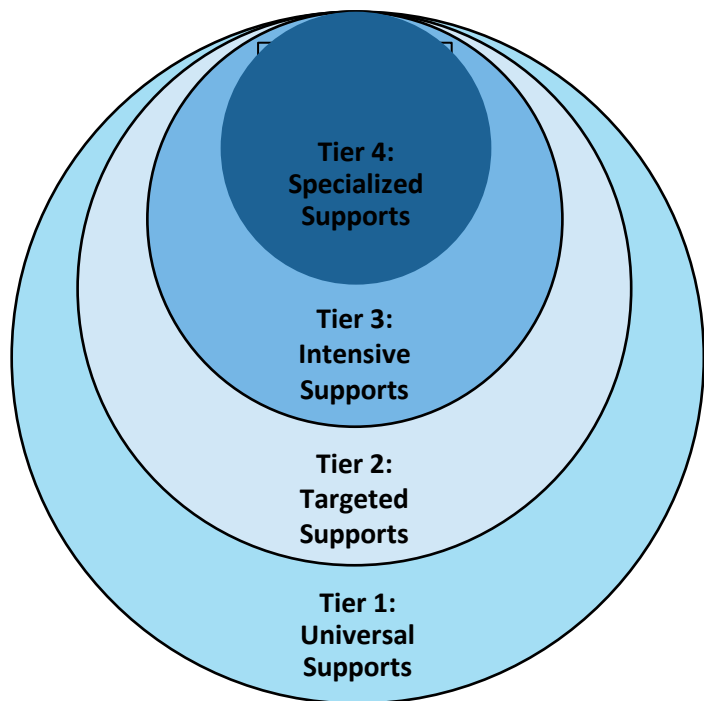
Parole Superintendent
Crime Prevention

Collaboration Mechanisms (Collaboration Table, Common Plan Tables, Integrated Clinical Team)

Clinical Coordinator
School Dist. Clinical Resource
Youth Probation Supervisor
SD Social Worker
Psychologists
Others as required

TIERED INTERVENTIONS

BEHAVIORAL, SOCIAL, EMOTIONAL, ADDICTIONS AND MENTAL HEALTH SUPPORTS



Tiers	Target population	Type of interventions	Service provider examples
Tier 1: Universal Supports	All Youths	Prevention and Universal Interventions; Early Identification of at-risk youth	All School Staff, ESST, DESST, CY Team, Community Partners, GNB Partners
Tier 2: Targeted Supports	At-Risk Youths	Targeted Interventions (individual or small group)	Specific School-Based Staff, ESST, DESST, and CY Team, Community Partners, GNB Partners
Tier 3: Intensive Supports	Youths with severe/acute needs	Intensive Individual Interventions; Intensive interventions with Community and School Support	Specialized School-Based Staff, DESST, CY Team, ICT, Community Partners, GNB Partners
Tier 4: Specialized Supports	Youth with complex mental health needs	Specialized Interventions for youth with complex needs	CY Team, ICT, Specialized Provincial Youth Services, Community Partners, GNB Partners

PREVENTION

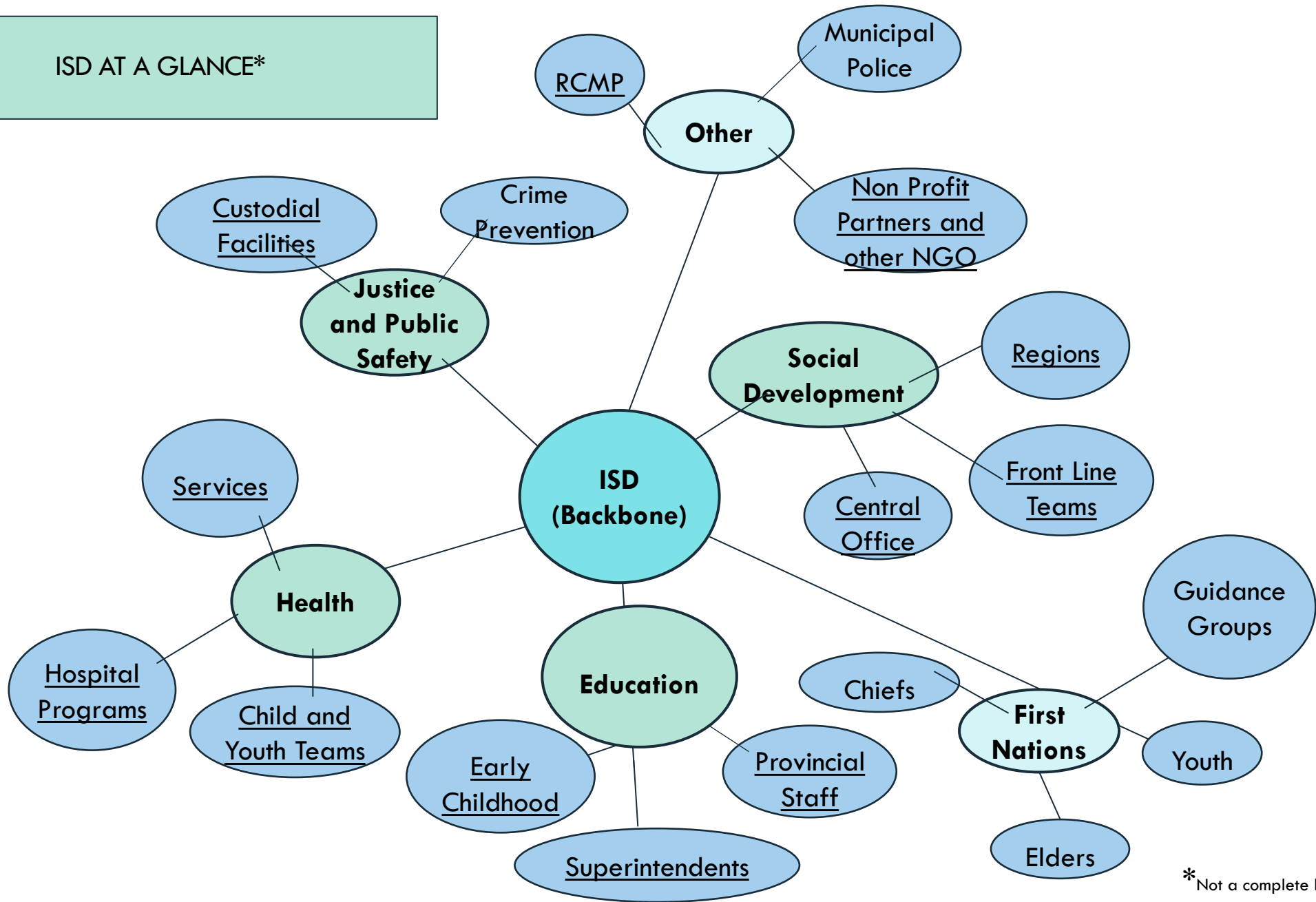
COMMUNITY
SUPPORTS

COMMUNITY
TREATMENT CENTERS

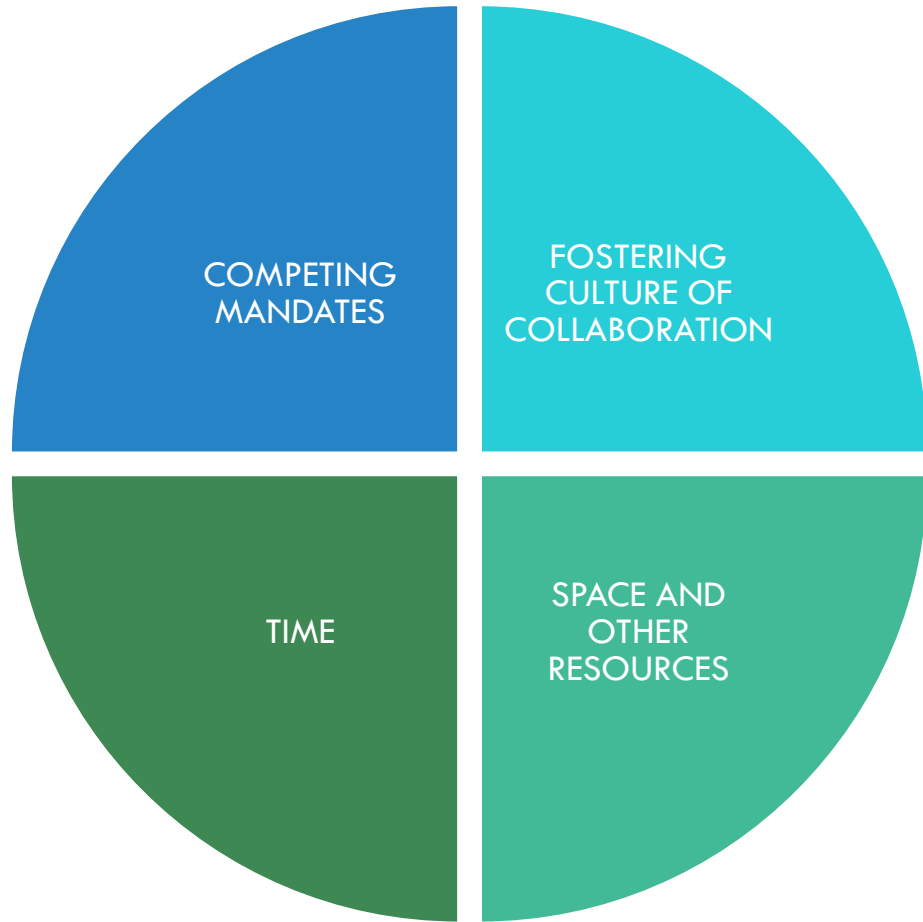
**INTERCONNECTED
CONTINUUM OF
SUPPORT AND
SERVICES**



ISD AT A GLANCE*



*Not a complete list of ISD partners



HURDLES

QUESTIONS?

Jessica Forbes
Provincial Coordinator
Integrated Service Delivery
Jessica.forbes@gnb.ca

506-453-8882